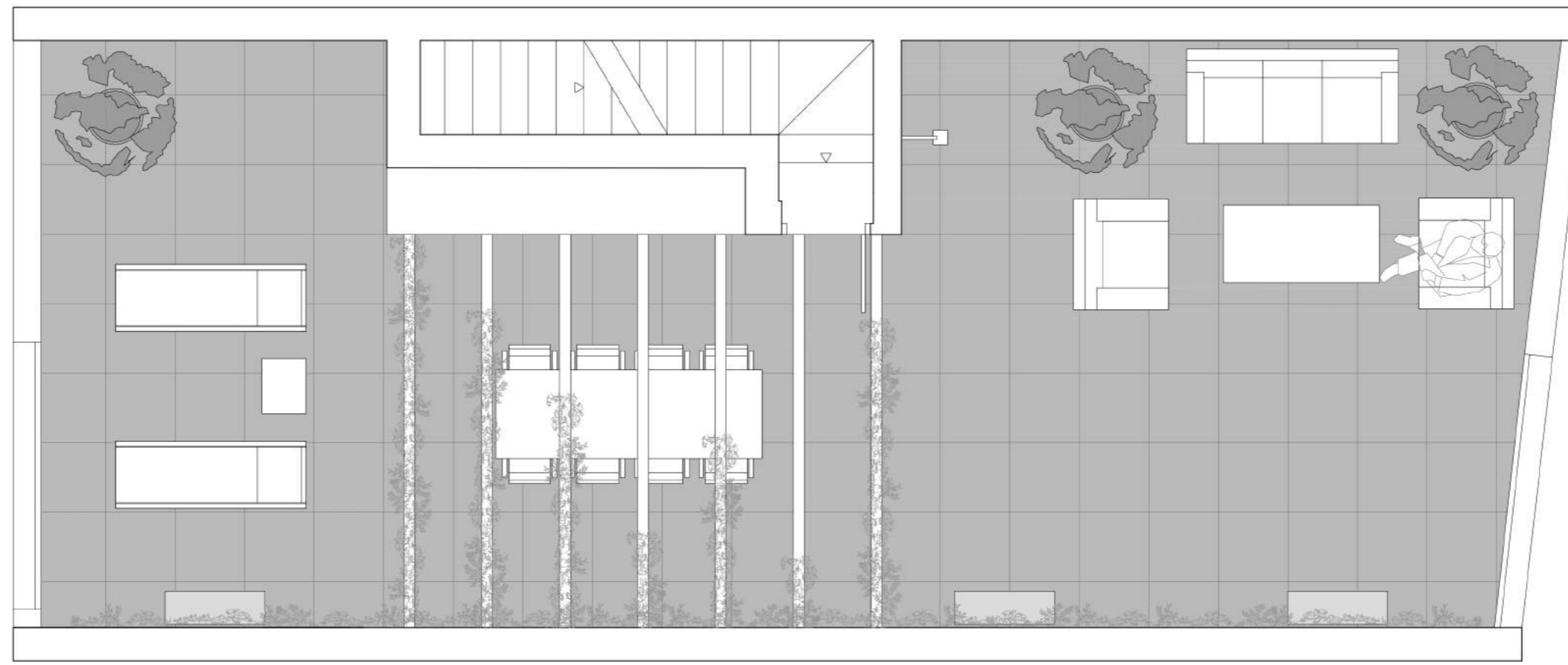
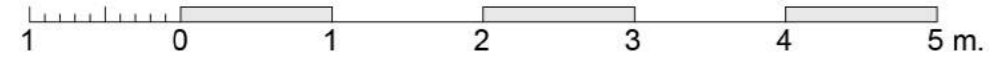


# VALLÉS

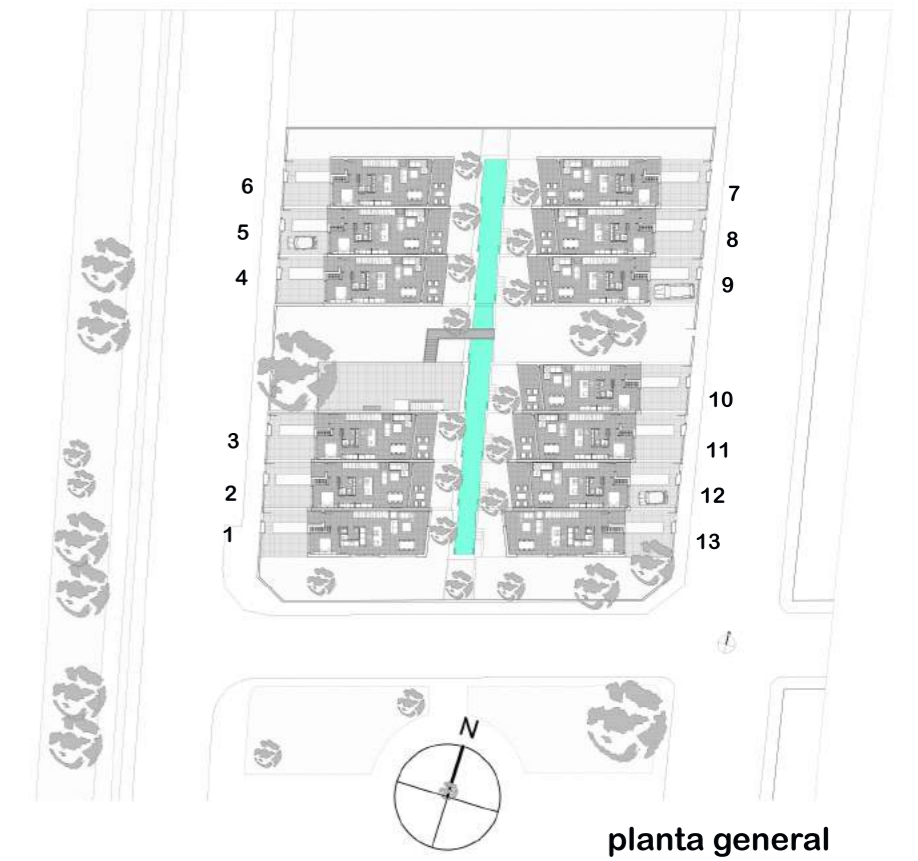
## amazonia

### viviendas tipo 2 a 6

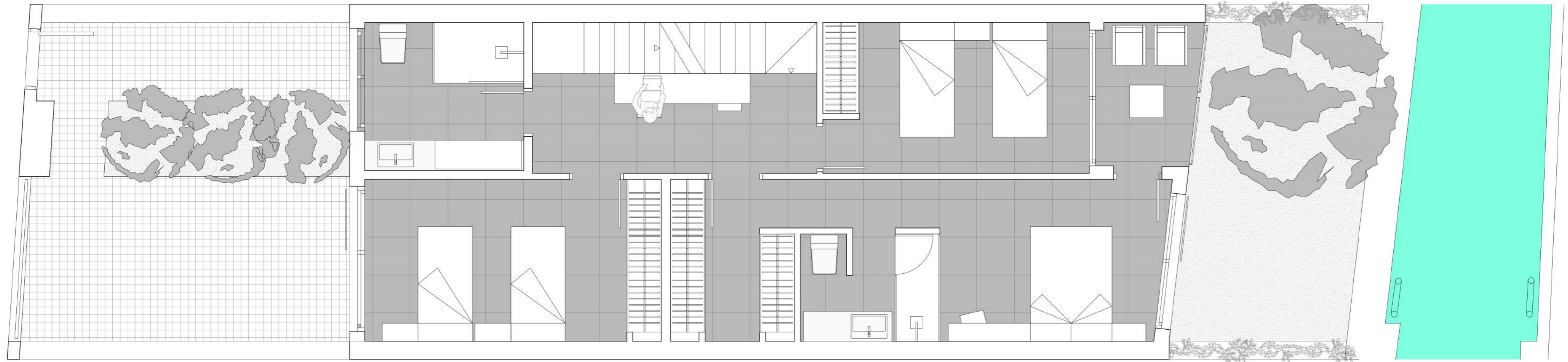
Superficie Construida con terrazas	240,18
Superficie Terrazas	81,52
Superficie Construida	158,66
Superficie Útil	122,66



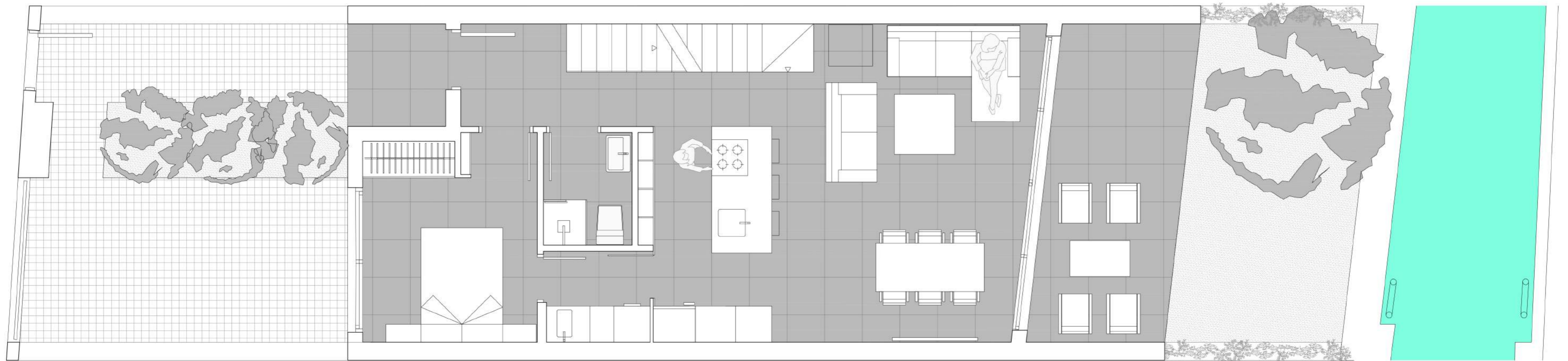
planta solarium



planta general



planta primera



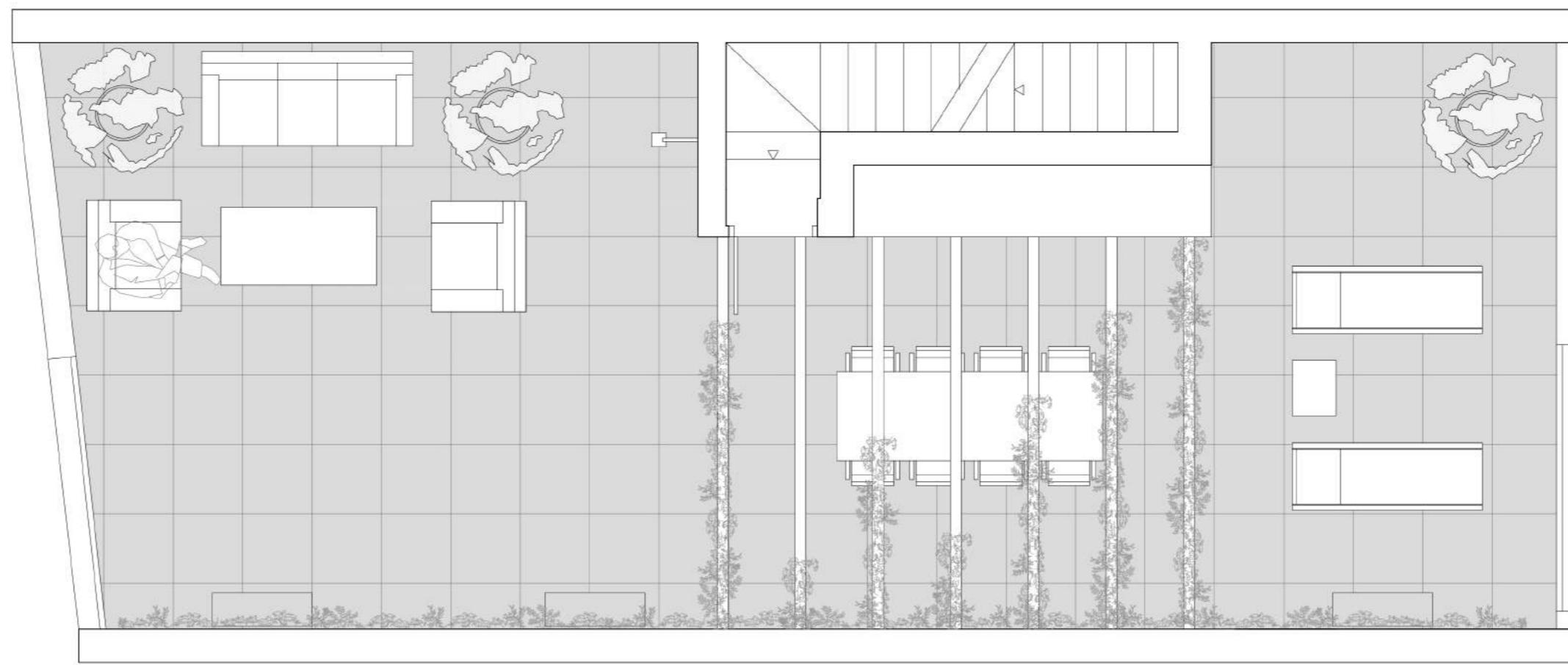
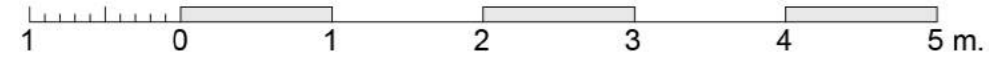
planta baja

# VALLÉS

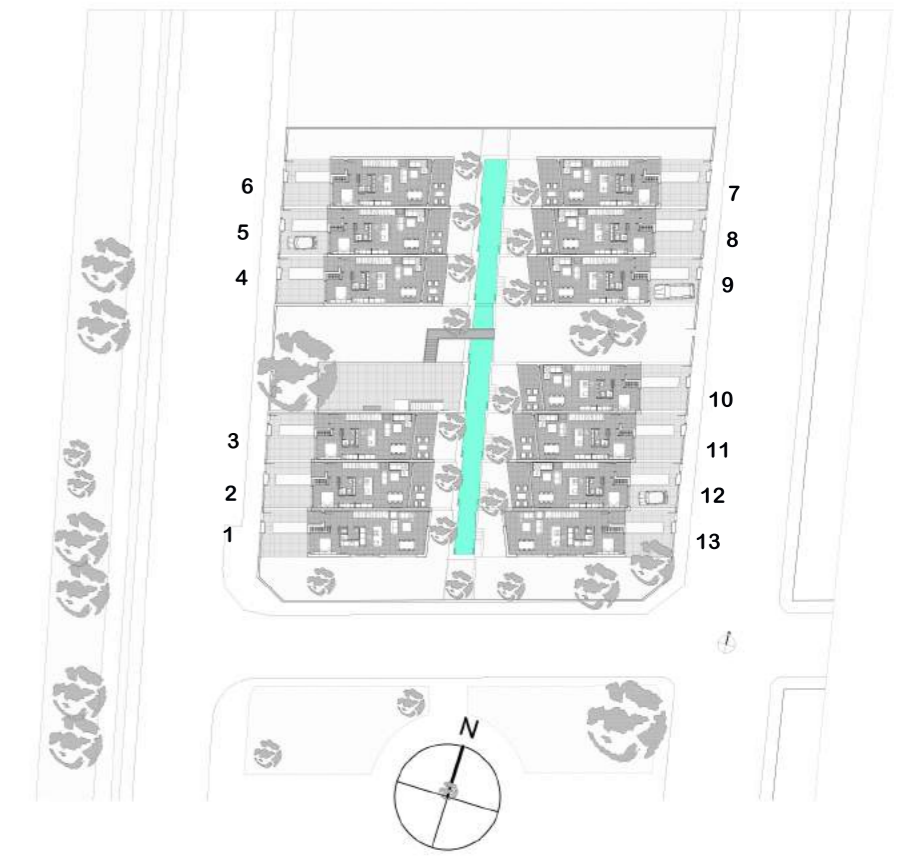
## amazonia

### viviendas tipo 7 a 12

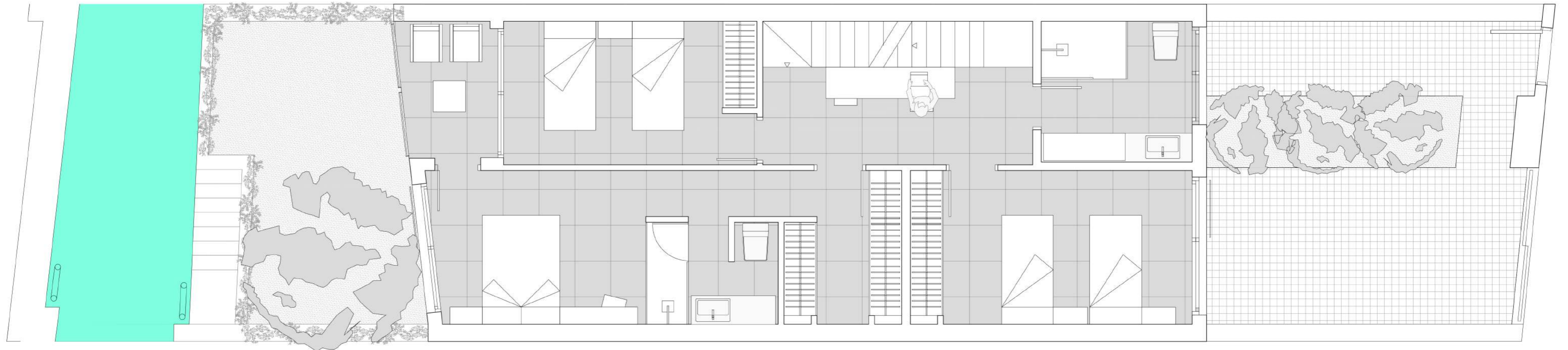
Superficie Construida con terrazas	240,18
Superficie Terrazas	81,52
Superficie Construida	158,66
Superficie Útil	122,66



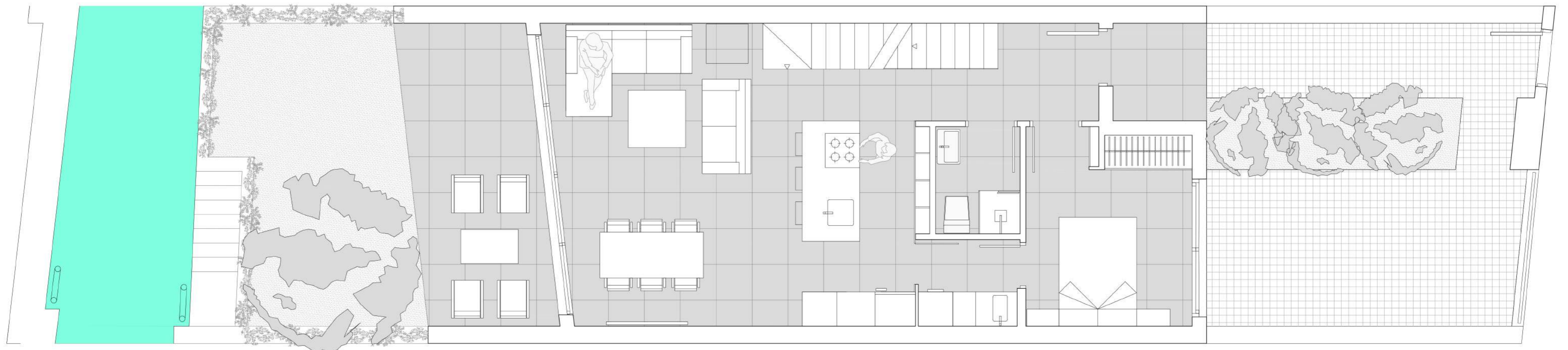
planta solarium



planta general



planta primera



planta baja